



SMF192Q – SMF200Q Series

192 – 200 Watt AC-DC Open Frame Medical Power Supply
IEC 60101-1-2 4th Ed. EMC, Energy Efficiency Level VI

Date: 10/2/17

Rev: 033117

Page: 1 of 1

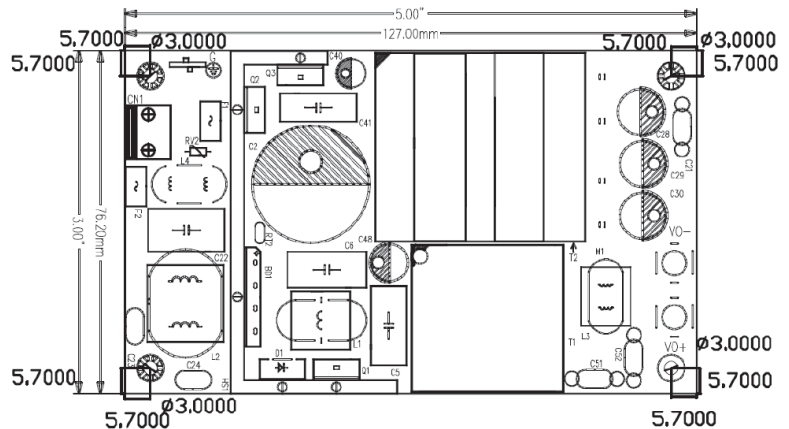


The SMF192Q – SMF200Q Series switch mode power supply offers 192 Watts to 200 Watts output power, with an output voltage range of 12 Vdc – 48 Vdc. Case style is an open frame with pin header, with ES/EN/IEC 60601-1 3.1 Edition safety approvals, IEC 60601-1-2 4th Edition EMC, UL/EN 60950-1 2nd Edition Safety approval, and Energy Efficiency Level 6.



Features:

- Universal Input 100 - 240 Vac
- Over-Voltage, Over-Current, Over-Temperature, and Short Circuit Protection
- 2 x MOPP Protection
- < 100 μ A Touch Current
- 100% Burn-In
- RoHS 2 Compliant
- Energy Efficiency Level: VI
- Meets IEC 60950-1 2nd Edition
- Meets IEC 60601-1-2: 2014 4th Edition EMC



SMF Q1 AR

Output Voltage: See Table

Output Power: See Table

Electrical Information

Input Voltage	90 to 264 Vac
Input Frequency	47 to 63 Hz
Input Current	2.8 A Max.
Over-Voltage Protection	Unit is protected from over-voltage conditions
Over-Current Protection	Unit is protected from over-current conditions
Over-Temperature Protection	Unit is protected from over-temperature conditions
Hold-Up Time	10 ms
Operating Temperature	0 - 50°C
Storage Temperature	-20 - 80°C
Weight	320 g (Ref.)
Industry Compliance	RoHS 2, Energy Efficiency Level VI
EMC Requirements	IEC 60601-1-2: 2014 4 th Edition
EMI Requirements	Meets Conduction and Radiation Limits of: Class B: FCC Part 18, CISPR-11, EN 55011
Safety Compliance	UL/c-UL (UL 60950-1: 2 nd Edition), CB (I.T.E.), FCC, UR/c-UR (ES 60601-1: 3.1 Edition), TUV T-Mark (EN/IEC 60601-1: 3.1 Edition)

Output Voltage	Output Current	Output Power (Max.)
12 Vdc	16.00 A	192 W
19 Vdc	10.50 A	200 W
24 Vdc	8.30 A	200 W
48 Vdc	4.20 A	200 W